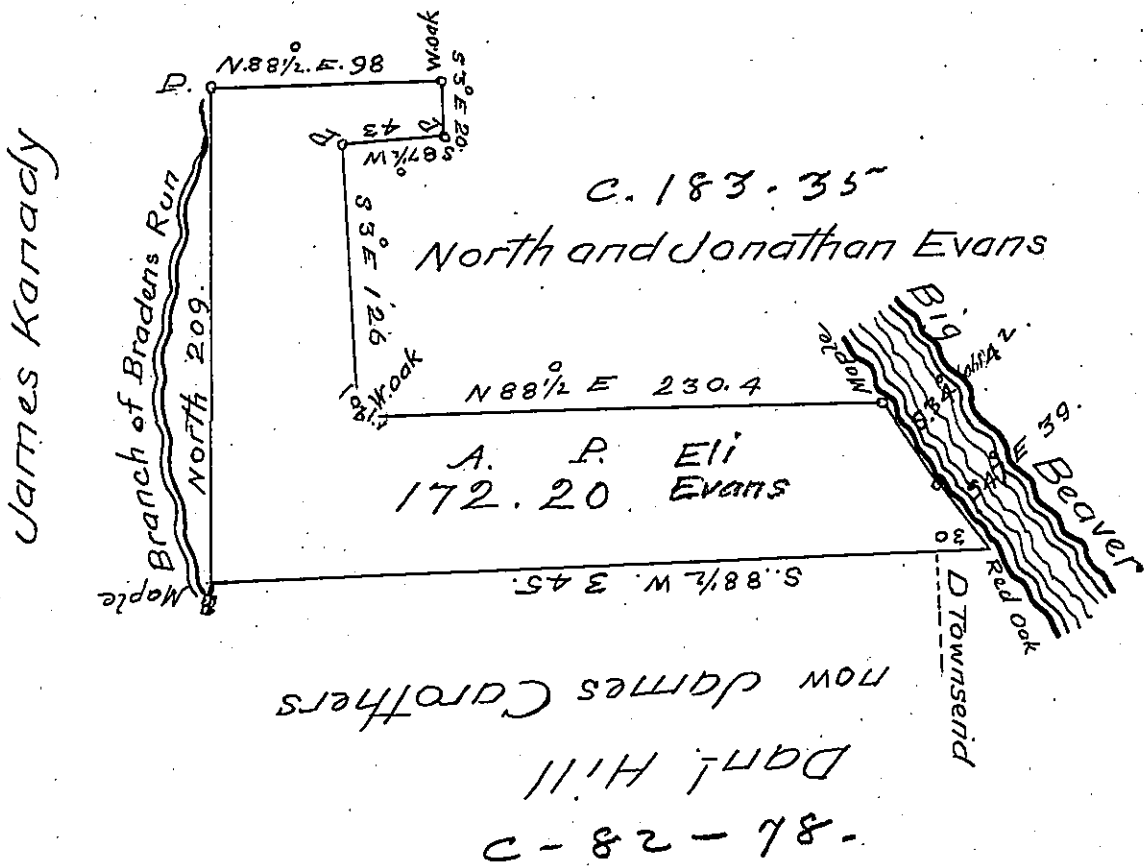


(Use this)



Field Notes
 Red Oak S 88 1/2 W - 345 Maple
 North - 209 P.
 N 88 1/2 E - 98 W oak
 S 3° E - 20 P.
 S 88 1/2 W - 43
 S 3° E - 126
 N 88 1/2 E - 230.4
 S 34 E - 42
 S 47° E 39.



The above draft represents a survey made April 24th A. D. 1827 in pursuance of an actual settlement and improvement situate on the West branch of Big Beaver Creek Brighton township Beaver County bounded as above Survey'd by my predecessor and enter'd in the Official Survey Book - and lately Resurvey'd by me with a little alteration containing one hundred and seventy two Acres ~~and~~ twenty perches and the allowance of six per cent for Eli Evans.

John Bryan D.S.

IN TESTIMONY that the above is a copy of the original remaining on file in the Department of Internal Affairs of Pennsylvania, made conformably to an Act of Assembly approved the 16th day of February, 1833, I have hereunto set my Hand and caused the Seal of said Department to be affixed at Harrisburg, this Twenty fifth day of August 1904

James B. Brown
 Secretary of Internal Affairs.